

Early learning and childcare statistics 2018

The provision and use of registered daycare of
children and childminding services in
Scotland as at 31 December 2018

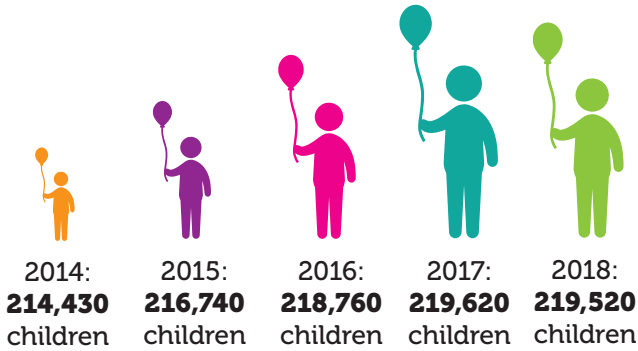
Published September 2019



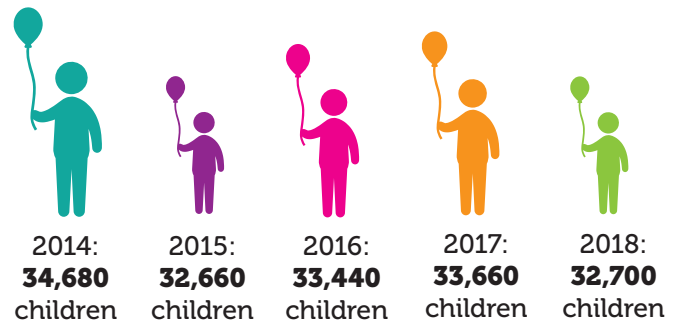
Contents

	Page
Executive summary	5
1. Children registered with early learning and childcare settings in Scotland	11
2. Number and capacity of early learning and childcare services in Scotland	16
3. Early Learning and childcare funding in Scotland	21
4. The quality of early learning and childcare services	23
5. Complaints in early learning and childcare services	28
6. Registered early learning and childcare services in local authority areas, urban and rural areas and by deprivation category	29
7. Service provision	35
Appendix 1: Background and methodology	40
Appendix 2: Data sources	41
Appendix 3: Data cleaning and dealing with missing data	42
Appendix 4: Changes to data items collected in 2018	43
Appendix 5: How the Care Inspectorate assesses quality themes during inspection	44

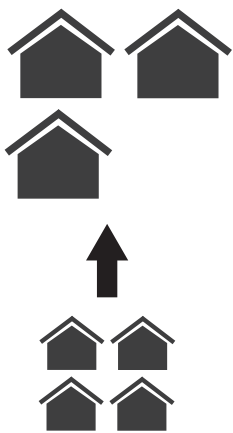
Increase in children registered with daycare of children services compared to 2014



Overall, there was a decrease in children registered with childminding services compared to 2014



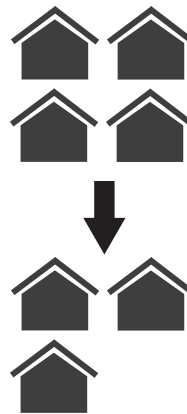
2014-18



Continued decrease in number of daycare of children services from **3,757** to **3,646** services between 2014 and 2017

Services are getting bigger, average is up from **42.0** to **46.2** children

Total number of registered places (capacity) up from **157,760** to **168,460**



Continued decrease in number of childminding services (**6,102** to **5,108**) services between 2014 and 2018

Average capacity of childminders has remained unchanged at **6.2** places per services

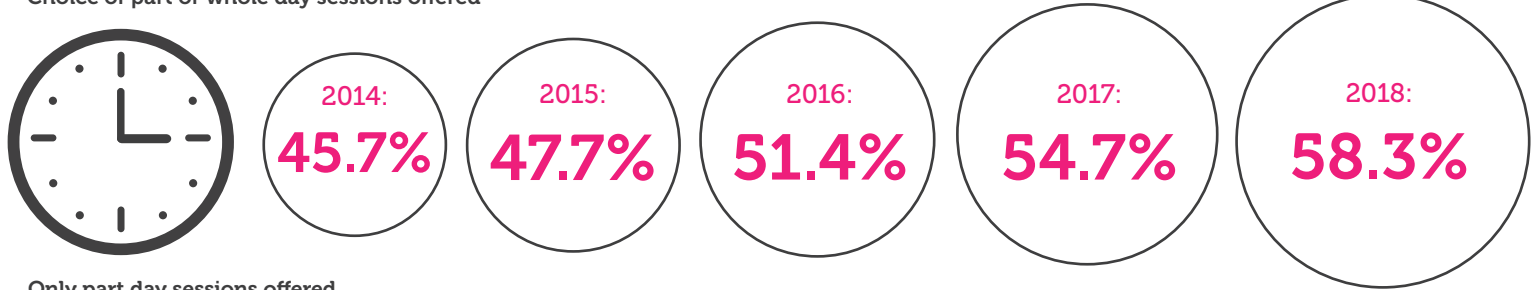
Total number of registered places (capacity) down from **37,540** to **31,650**.

More daycare of children services provide funded places in 2018 compared to 2014

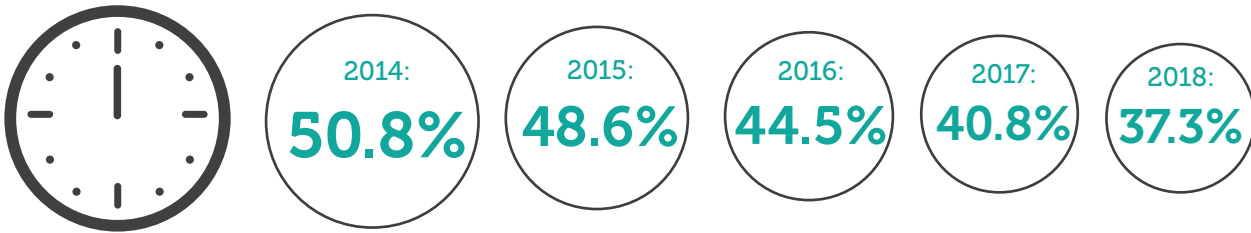


Flexibility in daycare of children opening times has continued to increase:

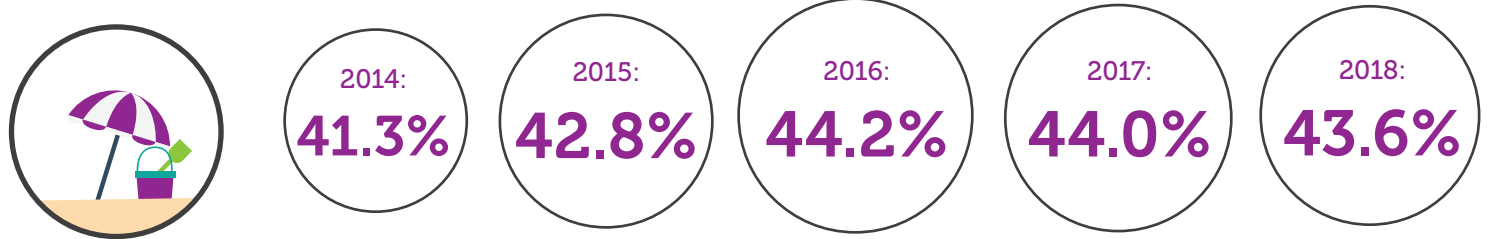
Choice of part or whole day sessions offered



Only part day sessions offered

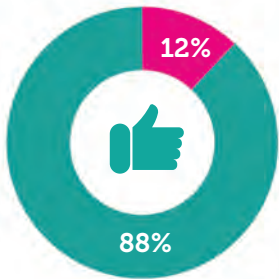


More daycare of children services offer sessions during working hours during school holidays compared to 2014:

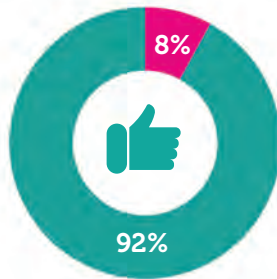


Early learning and childcare services are high quality services:

Daycare of children



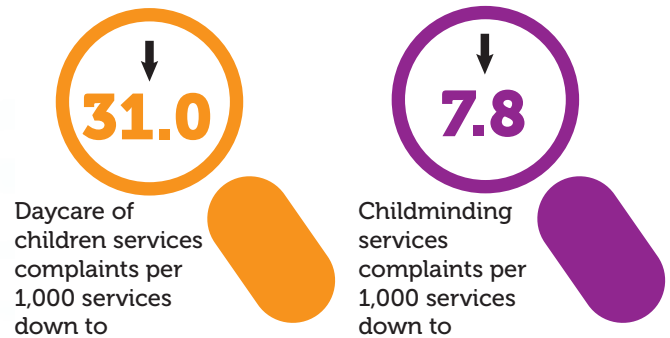
Childminders



■ quality good or better for all themes
■ quality adequate or lower for at least one theme

■ quality good or better for all themes
■ quality adequate or lower for at least one theme

Complaints upheld compared to last year:



Executive summary

General key points

- Compared to 2017, there are fewer early learning and childcare (ELC) services operating, but despite this the number of places available has increased.
- In preparation for the expansion of funded hours for 3- and 4- year olds (and eligible 2- year olds) to 1,140 hours in August 2020, there has been a 2.1% increase in the number of places available in nursery services, amounting to almost 2,500 additional places compared to 2017.
- The number of children registered in total has decreased slightly compared to 2017.
- The proportion of services that provide funded places for 3- and 4- year olds (and eligible 2- year olds) has continued to increase in 2018.
- Over half of local authority run nurseries offered whole day places (or a choice of a whole or a part day place) in 2018. This rate has increased year on year.

Children experiencing early learning and childcare

- The number of children registered with early learning and childcare services decreased compared to 2017. 252,220 children were registered at 31 December 2018 a decrease of 0.4% from 253,280 children registered in 2017.
- There were however increases in the number of children registered with out of school care services and holiday playschemes.

Number of registered services and service capacity

- The overall capacity in early learning and childcare services increased slightly by 0.1%, from 199,860 in 2017 to 200,110 registered places available at 31 December 2018. Total capacity available in childminding services declined while capacity in nurseries and out of school care services has grown, with increases across the private, voluntary or not for profit and public sectors.
- There were 3,646 daycare of children services, a small decrease over the year (55 fewer services compared to 2017), mainly due to decreased numbers of playgroups and children and family centres. However, the average size of daycare of children services has continued to increase every year. The average size of service in 2018 was 46.2 places, compared to 44.9 in 2017 and 44.2 in 2016.
- The number of childminders registered decreased by 5.9% compared to 2017. In part this was due to fewer new services registering, with only 396 new childminders registering in 2018 compared to 477 new registrations in 2017.

Funded places and service availability

- The proportion of services reporting that they provided funded early learning and childcare has increased in 2018. At 31 December 2018, 94.5% of nurseries, 84.6% of children and family centres and 75.7% of playgroups provided funded places.
- More daycare of children services now offer whole-day sessions; 62.7% offered this option. This rate has been continuing to increase year on year. 67.5% of nursery services offer whole day sessions.
- Over half of local authority nurseries (52.1%) now offer whole day sessions, or a choice of whole or part day sessions, a notable increase of 10.2 percentage points compared to 2017.

- The proportion of services offering a service in the morning before school hours has increased from 69.2% in 2017 to 71.6% in 2018. The rate of services that can provide care after school hours has also increased to 82.4%, up from 82.0% in 2017.

Quality of services

- The quality of services remained high overall with 91.9% of childminders and 88.0% of daycare of children services found to good or better for all quality themes. This represents a slight decrease compared to 2017 when 92.1% of childminders and 88.3% of daycare of children services were achieving this standard. The proportion of services with all themes found to be weak or unsatisfactory remained very low.
- Generally, childminders and nurseries had higher evaluation than out of school care or playgroups, while children and family centres consistently have had the best evaluations of all early learning and childcare services types.
- Overall, 90.6% of services offering funded ELC places were evaluated as Good or better in all quality themes.

Geographical variance in service provision

Urban – rural areas

- There was a higher rate of early learning and childcare services in small towns and rural areas compared to urban areas (in terms of the rate per population aged 0-15 years) although the number of services was higher in urban areas than in rural areas.
- In terms of service quality, there is no discernible differences between services located in urban or rural areas.
- The number of registered places in daycare of children services (as a rate per population aged 0-15 years) across Scotland was very similar to that reported in 2017, with small increases and decreases across all urban - rural categories.

Levels of deprivation

- Proportionately there were fewer childminders in the 10% most deprived areas (19.3 per 10,000 populations aged 0-15 years) than in the 10% least deprived areas (66.4 per 10,000 populations aged 0-15 years). While there was no connection between the deprivation levels and the rates of nursery services overall, there were notable differences between the sectors providing nursery services by deprivation. The 30% least deprived areas had the lowest rate of local authority nurseries while having the highest proportion of private nurseries.
- In childminding services, the quality of services varied according to the levels of deprivation - in the least deprived areas, the number of high-quality childminders was greater. Over half of the childminders in the 10% least deprived areas were evaluated as very good or excellent in all quality themes. For daycare of children services as a whole, there was no clear link between the distribution of high-quality services and levels of deprivation.

Supporting data tables

This publication is produced together with a suite of data tables in Excel format. Throughout this report these are referred to as 'supporting data tables'. These tables are presented in a file called 'Early Learning and Childcare Statistics 2018 – Supporting data tables' and can be downloaded from

<http://www.careinspectorate.com/index.php/statistics-and-analysis>

Definitions of the terms we use

The Care Inspectorate registers daycare of children services and childminders, which this report will collectively refer to as early learning and childcare services¹. For the purposes of this report, this includes daycare services only provided for school-aged children such as out of school care services and holiday play schemes.

The report also includes, but is not restricted to, information on early learning and childcare for 3- and 4-year-olds (and eligible 2-year-olds) funded by local authorities under the Children and Young People (Scotland) Act 2014.

In this report, we present information on early learning and childcare services, including the following.

- The **number of daycare of children services and childminders** registered with the Care Inspectorate as at 31 December 2018, including comparisons over time and number by provider sector and type of care service.
- **Children registered with early learning and childcare services**, calculated as the number of children registered with services as at 31 December 2018. This means the number of children enrolled with a service, even though they may not attend every day or only for part-day sessions. There is some element of double counting in the number of registered children, as children can be registered with more than one service, for example a child attending a morning nursery session and then a childminder in the afternoon. It is possible that the number of children enrolled can be larger than the service's registered capacity, due to all children not attending at the same time, for example where services offer part-time sessions.
- **Capacity**, which is the maximum possible attendance in a service at any one time, measured by number of available registered places.
- Information on the quality of early learning and childcare services through analysis of grading data as at 31 December 2018.
- Information on **complaints** in early learning and childcare services that were investigated by the Care Inspectorate between 1 January and 31 December 2018.

¹ When reporting on the number of children registered with early learning and childcare services, we would usually exclude crèche services, as they predominantly provide a drop-in service.

- Information on the number of services providing funded places under the Children and Young People (Scotland) Act 2014 as at 31 December 2018.

Childminding is defined by the Public Services Reform (Scotland) Act 2010 as someone looking after one or more children on domestic premises for reward for a period of more than two hours in any day.

However, this does not include:

- where children are related to the carer
- the fostering of children or kinship care
- someone caring for children in the children's own home.

By law, all childminders must be registered with the Care Inspectorate.

Childminding is usually provided from the childminder's home for a small number of children and often include the childminder's own children. Childminders are self-employed and can operate in several ways.

- An individual may operate a childminding service alone.
- A partnership of two or more people may operate a single registered childminding service.
- Childminders who are separately registered may work together in the home of one of the registered childminding providers.
- A childminding service may have paid or unpaid assistants to help provide the childminding service.

Daycare of children is defined by the Public Services Reform (Scotland) Act 2010 as a service that provides care for children on non-domestic premises for a total of more than two hours a day and on at least six days per year. This includes nurseries, crèches, out of school care and playgroups. These services can be run by the public, private or voluntary sector and require to be registered with the Care Inspectorate whether or not parents pay for the service.

The definition does not include services for school-aged children provided by schools where the provision is part of an educational activity. Nor does it include supervised activities where care is not provided, including sports clubs and uniformed activities such as the Scouts or Guides.

For the purposes of this statistical report, each of the registered daycare of children services has been assigned to one of the following categories of main service provision. This main service category is based on information supplied by the services in their annual returns. If a service did not respond to an annual return in a given year, then their main category of service has been estimated by using annual return information submitted in a previous year, or from information about the service, for example their conditions of registration.

A summary of the main service categories featured in this report are presented below with a brief description of each.

Children and family centre

Sometimes called community nurseries, children and family centres usually provide a full-day service for children aged 0-5 years. The majority are provided by local authorities. They usually prioritise children with the greatest needs together with a range of support services for families. This also includes specialised services, such as women's aid, housing support related services or respite care and support.

Crèche

Provides drop-in care for children in order to enable adults to engage in activities such as further education, shopping or attending a meeting.

Holiday playscheme

Provides care for school-aged children during the school holidays (this does not include activity-based clubs).

Nursery

Provides daycare facilities for children aged under 5 years, with some also caring for school-aged children. The service is normally used by parents and carers on a regular basis rather than a drop-in basis and the service is provided as a minimum during the school term. Nurseries can take several forms, such as a private nursery, a local authority nursery class or school or a nursery that is part of an independent school.

Nursery providing additional childcare

As above but where additional childcare (for example, breakfast club or out of school care) is recorded as being provided.

Out of school care

Provides care for mainly primary-school-aged children after the end of the school day and sometimes also before school starts. Many also provide a full-day service during the school holidays. Can be provided by the public, private or voluntary sectors, with many voluntary-sector out of school clubs run by parent committees.

Out of school care providing additional childcare

As above but where additional childcare (for example, breakfast club or holiday playscheme) is being provided.

Playgroup

Mostly voluntary sector services run by a parent committee, often with parents taking part in a rota to assist paid staff.

Sector provider types in early learning and childcare services

Public and local authority providers: this includes services run by local authorities and three services run by health boards.

Private providers: private businesses run by a sole trader, partnership or a limited company. Private providers operate on the basis of making a profit. Some offer funded places in partnership with a local authority. All childminding is run as a private business.

Voluntary or not for profit providers: also known as the third sector, voluntary and not for profit providers generally re-invest profits back into the services and include charities.

Funded early learning and childcare

Under the Children and Young People (Scotland) Act 2014, local authorities have significantly increased the amount of early learning and childcare provided. The funding for all 3- and 4-year-old children initially increased from 475 to 600 hours per year and some eligible 2-year-olds also receive this level of funding. This will increase to 1140 hours per year by 2020 (although a phasing in of the expanded entitlement means that some children will receive increased funded hours before 2020). The Scottish Government has published, “A Blueprint for 2020: The Expansion of Early Learning and Childcare in Scotland”, which sets out the policy vision and framework for delivering the expansion of the early learning and childcare entitlement that is of a high quality, flexible, affordable and accessible provision for families. The new service model will be ‘provider neutral’. It offers parents and carers a greater choice of settings from which to access their funded entitlement and through the introduction of a new ‘national standard’, provides assurance that, regardless of whether the funded hours are provided by a service in the public, private or voluntary sectors, or through provision offered by childminders, that all settings providing the funded entitlement will have met the national standard.

Other types of funding for children to attend early learning and childcare services can be made by local authorities. However, most funding is under the Children and Young People (Scotland) Act (2014) and therefore this publication only covers this type of funding, described as ‘funded early learning and childcare’ or ‘funded places’.

1. Children registered with early learning and childcare settings in Scotland

Overall, 252,220 children were registered with an early learning and childcare setting on 31 December 2018. This is lower than the 253,280 registered at the same point in 2017 but an increase compared to the 249,110 registered at 31 December 2014.

Of these, 219,520 (87.0%) children were registered with daycare of children services and 32,700 (13.0%) children were registered with childminders. This is summarised in Table 1 below and in more detail in supporting table 1a.

Table 1: Number of children registered with early learning and childcare services by main type of service as at 31 December 2014, 2015, 2016, 2017 and 2018.

Care Service main type	December 2014	December 2015	December 2016	December 2017	December 2018
Childminding	34,680	32,660	33,440	33,660	32,700
Children and family centre	10,100	11,440	12,020	11,860	11,050
Holiday playscheme	4,460	3,960	4,040	3,860	4,240
Nursery	142,790	143,000	145,440	145,810	145,530
Out of school care	46,080	47,890	50,830	52,500	53,600
Playgroup	8,000	6,780	6,430	5,600	5,100
Other services*	3,000	3,670	0	0	0
All care services types	249,110	249,400	252,200	253,280	252,220

* From 2016 onwards, services are classified within one of the set categories. The option for 'other services' or 'no single service type has been removed'.

All figures are rounded to the nearest 10 to express the uncertainty in these estimates. For this reason, totals may not exactly equal the sum of their parts.

This represents an overall rate of 27.5 children per 100 population aged 0-15 registered with an early learning and childcare service. This rate varies depending on type of care service and by age group and suggest that almost all children aged 3 and 4 are registered with at least one service, as are over half of all 2-year-old-children and around a third of all 1-year-olds, 5-year-olds and 6-year-olds.

1.1. Number of children registered with childminding services

The number of children registered with childminding services has decreased from 33,660 in 2017 to 32,700 in 2018 (a decrease of 2.9%). Compared to 2014, the number of children registered with childminders has decreased by 5.7% (from 34,680 children registered in 2014).

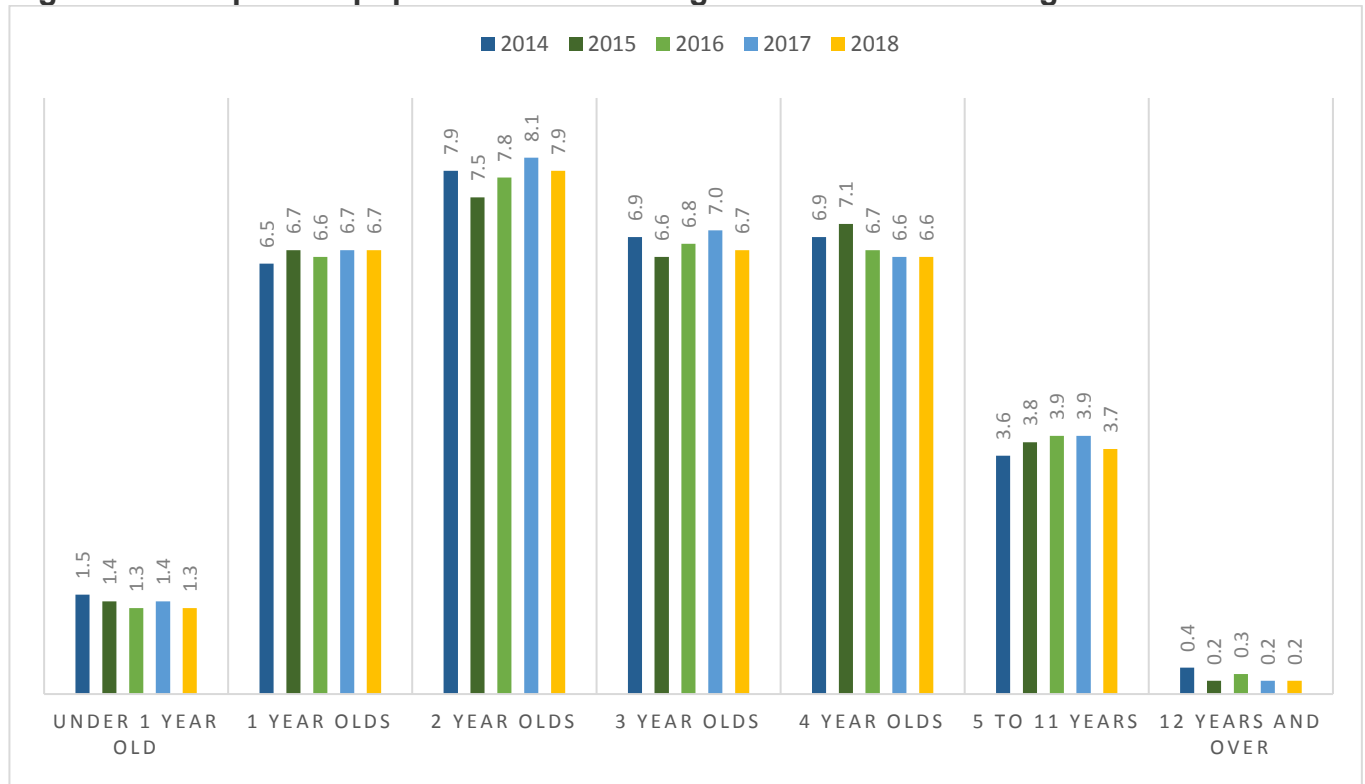
Between 2017 and 2018 we also saw a decline in the number of childminding services operating, from 5,426 in 2017 to 5,108 in 2018, a decrease of 6.2%, this is covered further in chapter 2.

There were decreases in the number of children registered with childminders in all age groups comparing 2018 to 2017, in particular a 3.9% decline in the number of 3 and 4-year-olds registered and a decrease of 2.4% in children aged 5 to 11 years. In terms of the rate per 100 population:

- the number of 3-year-olds registered decreased to 6.7 children per 100 population compared to 7.0 per 100 population in 2017,
- the rate of 4-year-olds remained at 6.6 children per 100 population,
- the number of 5 to 11-year-olds registered declined to 3.7 children per 100 population compared to 3.9 per 100 population in 2017.

Figure 1 illustrates the rates of children registered per 100 population in childminding services at between 2014 and 2018.

Figure 1: Rate per 100 population children registered in childminding services



As the decline in number of services is greater than the decline in number of children registered, this suggests that the number of children registered per service has increased in 2018. The data collected from childminding services shows that the rate of children registered per service has increased to 6.4 children per service in 2018 compared to 6.2 children per service in 2017.

1.2. Number of children in daycare of children services

The number of children registered with daycare of children services (excluding creches) in 2018 was similar to 2017, only decreasing slightly by 0.05%. There were 219,520 children registered with daycare of children services in 2018 compared to 219,630 children registered in 2017. Compared to 2014, the number of children registered with daycare of children services has increased by 2.4% (from 214,430 children registered in 2014).

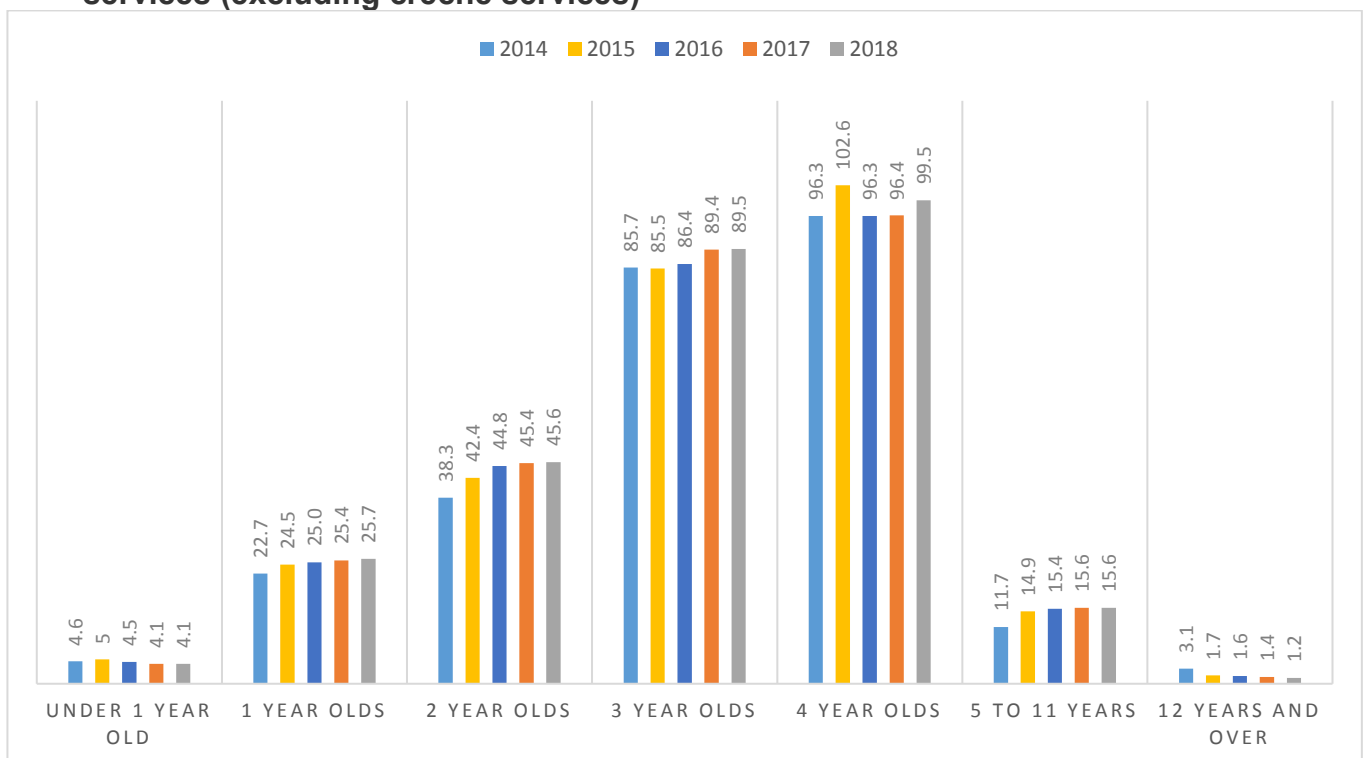
There were small changes in the numbers of children aged 3 or above registered with daycare of children services, with a 0.1% decrease in the number of 3- and 4-year olds

registered compared to 2017 and a 0.4% increase in the number of children aged between 5 and 11.

In terms of the rate of children registered per 100 population, the largest increase compared to 2017 was in the 4-year-old age group with 99.5 children registered per 100 population (compared to 96.4 per 100 population in 2017). The rate of 3-year-olds registered increased slightly compared to 2017, from 89.4 to 89.5 per 100 population while the rate of children aged 5 to 11 years old remained constant with 2017 at 15.6 per 100 population.

Figure 2 shows the rates of children registered per 100 population in daycare of children services at 31 December 2018 compared to the previous two years.

Figure 2: Rate per 100 population children registered in daycare of children services (excluding creche services)



Daycare of children covers a wide range of types of care provision, and the prevalence of each type varies across Scotland and by sector. Table 2 below illustrates the percentage of children registered in type of care service by service provider sector.

Table 2: Percentage of children registered in daycare of children services (excluding creches) by provider sector at 31 December 2018

Main type of daycare provision	Number of children registered	Sector		
		Local Authority	Private	Voluntary or Not for Profit
Children and Family Centre	11,050	78.9%	0.1%	21.0%
Holiday Playscheme	4,240	10.6%	43.7%	45.6%
Nursery	145,530	53.0%	40.2%	6.8%
Out of School care	53,600	9.4%	40.5%	50.1%
Playgroup	5,100	0.9%	12.9%	86.2%
All daycare of children services	252,220	41.7%	37.7%	20.7%

1.3 Number of children registered with nurseries

The number of children registered with a nursery declined slightly, from 145,810 in 2017 to 145,530 (a decrease of 0.2%). The proportion of children registered in each sector remained very similar to 2017. Compared to 2014, the number of children registered with a nursery increased by 1.9%, from 142,790 children registered.

Local authorities remain the largest provider sector of nurseries in terms of number of children registered. Compared to 2017 there were very small changes (less than 1 percentage point in each instance) in the number of children registered with nurseries by sector.

Supporting table 1b has a full breakdown of the number of children registered by sector and age group.

1.4 Number of children registered with out of school care services

The number of children registered with out of school care services has increased from 52,550 in 2017 to 53,600 in 2018, an increase of 2.0% (note that out of school care does not include holiday playschemes which are a separate category for the purposes of this report). Compared to 2014, the number of children registered with an out of school care service has increased by 16.3% (46,080 children registered at 31 December 2014).

The voluntary or not for profit sector was the largest provider of out of school care in terms of number of children registered (50.1%), compared to the private sector with 40.5% and local authority services with 9.4% of children registered.

Out of school care and holiday playschemes were the only types of daycare services that had an increase in the number of children registered in 2018 compared to 2017. The number of children registered with out of school care services has increased each year since 2014. Supporting table 1c has a full breakdown of the number of children registered by sector and age group in out of school care services.

1.5 Children aged under 1 year registered with services

In 2018, 0.5% of childminders, 0.6% of nurseries and 5.2% of children and family centres had very young babies up to 3 months old registered with their service.

In total, across all early learning and childcare service types (excluding creches), 5.5 per 100 of the population aged under 1 year were registered with a service.

Of all children registered with early learning and childcare services (excluding creches) 1.2% were aged 6 to 12 months, 0.1% were aged 3 to 6 months and only 0.02% were aged under 3 months.

2. Number and capacity of early learning and childcare services in Scotland

2.1 Numbers and capacity of childminding and daycare of children services

At 31 December 2018, there were 8,754 early learning and childcare services in Scotland, with a total combined capacity of 200,110 places.

Of these 3,646 were daycare of children services, providing a total of 168,460 places. Although the number of daycare of children services decreased by 55 in comparison to 2017, the total capacity in daycare of children services increased by 2,200 places (capacity is defined as the maximum potential attendance at any one time, measured by the number of registered places available according to each service's conditions of registration).

The increase in capacity in daycare of children services is mainly accounted by a large increase in nursery places. The capacity in nursery services increased by 2,480 places compared to 2017, with 2,300 additional places coming from local authority nursery services alone. Compared to 2014, the number of places available in nursery services has increased by 10.0%, from 108,440 to 119,250 places. This increase reflects the continued preparation for the expansion of statutory funded hours for 3-and 4-year-olds (and eligible 2-year-olds) in August 2020.

The number of childminding services operating has continued to decrease in 2018. There were 5,108 childminders operating at 31 December 2018, with a total combined number of 31,650 places. This represents a 5.9% decline in the number of childminding services and a 5.8% decrease in the number of places available compared to 2017. Compared to 2014, there are 994 fewer childminding services operating, a 16.3% decrease in the number of services and an 15.7% decrease in the number of places available.

Overall, the net increase in capacity across all early learning and childcare services (childminders and daycare of children) compared to December 2017 is 0.1% or 240 more places. Compared to 2014, there are 4,810 more places available, an increase of 2.5%.

The number of new childminding services registered in the year has also continued to decline, having an impact on the overall number of services operating. In 2018, 396 new childminding services registered compared to 477 new registrations in 2017 (and 592 in 2016).

The proportion of childminders who cancel their registration within the first 12 months has also continued to increase. 13.2% of the childminding services that registered in 2017 cancelled within their first 12 months of operation (most cancelling during 2018). This is an increase compared to the 10.3% reported in 2017 (relating to new registrations from 2016, cancelling within 12 months of registering).

Table 3 below illustrates the numbers of services operating and total number of places available in daycare of children and childminding services over time.

Table 3: Trends in number of services and total capacity (all services, daycare of children and childminding services)

	2014	2015	2016	2017	2018
All early learning and childcare services					
Number of services	9,859	9,726	9,402	9,127	8,754
Total capacity	195,300	196,400	200,190	199,870	200,110
Childminders					
Number of services	6,102	5,954	5,669	5,426	5,108
Total capacity	37,540	36,700	35,180	33,610	31,650
Daycare of children services					
Number of services	3,757	3,722	3,733	3,701	3,646
Total capacity	157,760	162,700	165,010	166,260	168,460

Most childminders are registered for a maximum capacity of 6 children, which is the most they can look after at any one time on their own, including the childminders own children. Some childminders choose to employ assistants to have a greater maximum number of places. The average number of places in childminding services has remained consistent with previous years at 6.2 places per service.

The average number of places in daycare of children services has continued to increase year on year and has risen again in 2018 from 44.9 to 46.2 (see table 4 below). This increase is mainly due to the large increase in the number of places in local authority nursery services. In 2018, the Care Inspectorate completed almost 1,200 variations for daycare for children service. Most of these variations enabled services to increase their maximum number of places, expand their opening hours or to accommodate a wider range of age groups.²

Table 4: Average number of places per service available in childminding and daycare of children services as at 31 December 2014, 2015, 2016, 2017 and 2018

Average places	2014	2015	2016	2017	2018
Childminding	6.2	6.2	6.2	6.2	6.2
Daycare of Children	42.0	43.7	44.2	44.9	46.2

2.2 Services by provider sector

All childminding services are privately operated, while daycare of children services are operated by a range of private, local authority and voluntary or not for profit service providers.

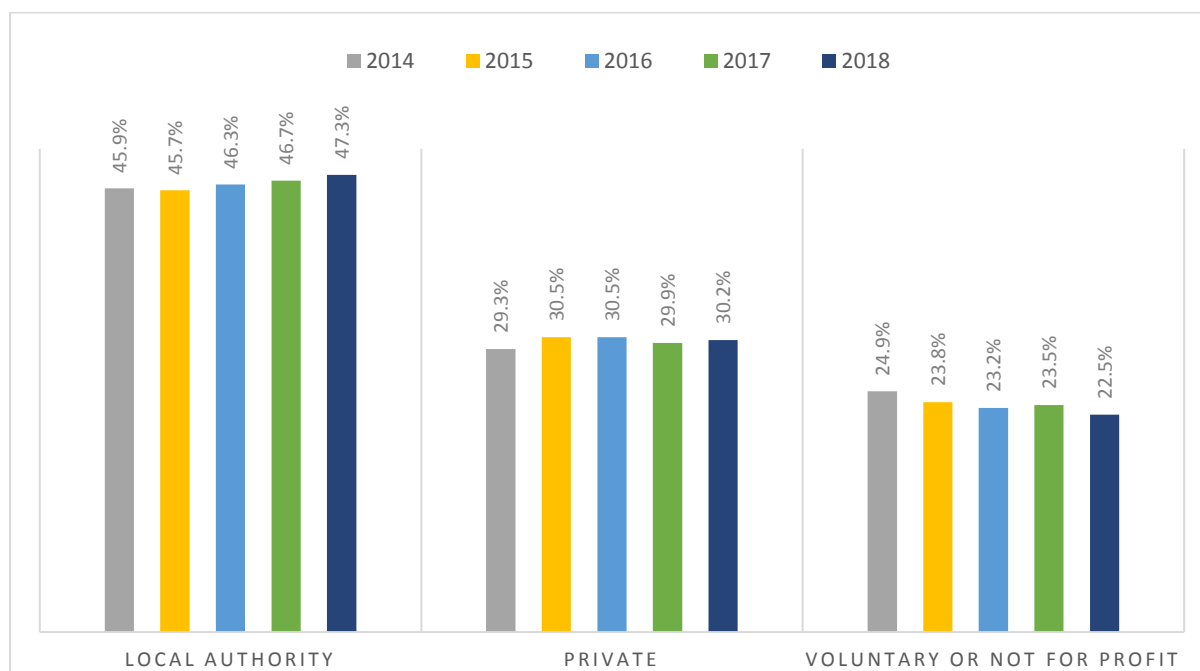
For daycare of children services, 47.3% were provided by local authorities (which also includes 3 nursery services run by health boards). 30.2% were privately operated

² Registered care services can apply for a variation to add, vary or remove a condition of registration. For daycare of children services that want to increase their service provision, this could be an increase to the number of registered places (capacity) or changes to the service availability (opening hours).

services while 22.5% were voluntary or not for profit services. This distribution by sector has changed since 2014, with proportionately more services provided by local authorities and the private sector, and fewer by the voluntary or not for profit sector.

Figure 3 below illustrates the proportion of services by sector over time.

Figure 3: Percentage of registered daycare of children services by provider sector, as at 31 December 2014-2018



2.3 Numbers of services and capacities by service categories

Daycare of children services cover a wide range of different areas of care provision, the largest of which is nurseries followed by out of school care and playgroups. Each registered service may provide multiple different types of service. For example, a nursery may provide out of school care, or a children and family centre may operate a holiday playscheme. We have categorised services in this report based on what they have told us is the main type of service they provide.

A summary of the number of services operating between 2014 and 2018 by service type is presented in Table 5 below.

Table 5: Number of registered services by main service type, as at 31 December 2014-2018

	Dec 2014	Dec 2015	Dec 2016	Dec 2017	Dec 2018	% change 2017 to 2018
Childminding	6,102	5,954	5,669	5,426	5,108	-5.9%
Children and family centre	139	149	161	151	136	-9.9%
Crèche	83	78	73	75	63	-16.0%
Holiday playscheme	50	48	44	43	39	-9.3%
Nursery	2,443	2,449	2,468	2,475	2,467	-0.3%
Out of school care	703	726	739	738	748	1.4%
Playgroup	291	272	248	219	193	-11.9%
No single service type*	48	50	0	0	0	n/a
Total	9,859	9,726	9,402	9,127	8,754	-4.1%
Total excluding childminding	3,757	3,772	3,733	3,701	3,646	-1.5%

* From 2016 onwards, services are classified within one of the set categories. The option for 'other services' or 'no single service type has been removed'.

- Compared to 2017, total capacity across all service types has remained at around 200,000 places.
- The available capacity in nurseries and out of school care has increased year on year since 2014.
- Compared to 2017, capacity in nursery services has increased by 2.1% to a total of 119,250 places. Although there were increases in the private and voluntary or not for profit sectors, the increase in capacity was mainly driven by a 3.7% increase in the public sector.

Table 6 below and supporting table 22 show in detail the how capacity has grown since 2014.

Table 6: Average places per service and total capacity of services comparing 31 December 2014, 2017 and 2018

	2014		2017		2018		% change in total capacity 2017 to 2018
	Total capacity (reg'd places)	Average capacity per service	Total capacity (reg'd places)	Average capacity per service	Total capacity (reg'd places)	Average capacity per service	
Childminding	37,540	6.2	33,610	6.2	31,650	6.2	-5.8%
Children and family centre	7,380	53.1	8,210	54.4	8,190	60.2	-0.2%
Creche	3,100	37.3	2,350	31.4	1,790	28.4	-23.8%
Holiday playscheme	2,030	40.6	1,590	36.2	1,360	34.9	-14.5%
Nursery	108,440	44.4	116,770	47.2	119,250	48.3	2.1%
Out of school	28,510	40.6	32,320	43.8	33,440	44.7	3.5%
Playgroup	6,800	23.4	5,020	22.9	4,430	22.9	-11.8%
No single service type*	1,510	31.5	n/a	n/a	n/a	n/a	n/a
Total	195,310	-	199,860	-	200,110	-	0.1%
Total excluding childminding	157,760	42.0	166,260	44.9	168,460	46.2	1.3%

* From 2016 onwards, services are classified within one of the set categories. The option for 'other services' or 'no single service type' has been removed.

3. Early Learning and childcare funding in Scotland

The Children and Young People (Scotland) Act 2014 has significantly expanded funded entitlement for early learning and childcare. The current statutory funded entitlement for all children aged 3 and 4 years (and eligible 2-year-olds) is 600 hours. The funded entitlement will increase further to 1,140 hours for children aged 3 and 4 years (and eligible 2-year-olds) by August 2020.

The majority of funded places are offered by nurseries. In addition, some local authorities offer funded places through other services like playgroups or childminders.

The proportion of services offering funded places increased in nurseries, children and family centres and playgroups compared to 2017. The proportion of services providing funded places between 2014 and 2018 is presented in table 7 below and in more detail in supporting table 27c.

Table 7 below shows that there was an increase in nursery services providing funded places, from 92.0% in 2014 to 94.5% in 2018. The proportion of private services offering funded places has continued to grow, while in voluntary or not for profit services the rate was lower than the previous year (as was the case in 2017).

Table 7: Proportion of services providing funded early learning and childcare as at 31 December 2014 - 2018

Care Service type	2014	2015	2016	2017	2018
Nurseries	92.0%	92.6%	93.9%	94.1%	94.5%
Children and family centres	76.0%	84.0%	72.0%	75.5%	84.6%
Playgroups	69.0%	72.0%	75.4%	74.9%	75.7%

Most services (66.0%) offering funded places provide these for children aged 3 years and older only. A further 31.5% of services offer funded places for 2-year-olds in addition to children aged 3 or older. Only 2.5% of services offering funded places do so exclusively for 2-year-olds. 41.5% of daycare of children services that are registered to include children aged under 3 in their care provision only offer funded places to children aged over 3.

The majority of local authority nurseries (73.6%) that offer funded places do so exclusively for children aged 3 and 4 years. Most private and voluntary or not for profit nurseries that provide funded places are also focussed on provision of places for children aged 3 and 4 years. 30.0% of nurseries offer funded places for 2-year-olds (including those offering places for 2-year-olds and 3 and 4 year olds). See tables 8 and 9 below for further detail.

Table 8: Proportion of all services offering funded places by age groups

Care service type	Provision of funded places		
	funded places for 2-year-olds only	funded places for 2-year-olds and 3 and older	funded places for 3 years and older only
Children and family centre	19.1%	73.0%	7.8%
Nursery	0.9%	29.2%	70.0%
Playgroup	12.3%	37.7%	50.0%
All service types offering funded places	2.5%	31.5%	66.0%

Table 9: Nursery services offering funded places by age groups

Nurseries by sector	Provision of funded places		
	funded places for 2-year-olds only	funded places for 2-year-olds and 3 and older	funded places for 3 years and older only
Public	0.5%	25.9%	73.6%
Private	1.2%	34.3%	64.5%
Voluntary or Not for Profit	2.2%	38.3%	59.4%
All services offering funded places	0.9%	29.2%	70.0%

Quality theme evaluations

In terms of quality theme evaluations, the quality of services providing funded places was higher than those not providing funded places (see supporting tables 34i and 34j). In 90.6% of services offering funded places, the quality was found to be good or better in all quality themes.

In 82.4% of private nurseries providing funded places, the quality was good or better for all quality themes assessed, while this was also the case for 63.2% of private nurseries not providing funded places. Similarly, in voluntary or not for profit nurseries providing funded places, 90.9% of services providing funded places were evaluated as good or better in all quality themes, compared to 71.4% of services in this sector not providing funded places. The same applies when looking at playgroups- services providing funded places were found to be a higher quality than those not providing funded places. This reflects the fact that high quality is one of the key criteria for becoming a funded provider. Supporting tables 34i 34j show a breakdown of quality theme evaluations by sectors and service type.

4. The quality of early learning and childcare services

The quality of early learning and childcare services continues to be overall very high.

- In 45.2% of childminders the quality was found to be of the highest standard (excellent or very good in all themes assessed), slightly lower than the 47.6% in 2017. The proportion of childminders found to be good, very good or excellent in all themes also decreased very slightly from 92.1% in 2017 to 91.9%.
- In general, childminders tend to achieve better evaluations at inspection compared to daycare of children services. At 31 December 2018, 91.9% of childminders were found to be good or better in all quality themes compared to 88.0% of daycare of children services.
- There has been a decrease in the proportion of daycare of children services found to be very good or excellent in all quality themes, from 40.3% in 2016, to 37.8% in 2017 and now to 35.7% in 2018.
- The proportion of daycare of children services found to be weak or unsatisfactory in all themes has remained very low, at 0.3% consistent with the level in 2017.
- Only 2.0% of daycare of children services were found to be weak or unsatisfactory in any of the quality themes, compared to 0.7% of childminders. This is a similar compared to 2017 when 1.9% of daycare services and 0.6% of childminders had at least one quality theme evaluated as weak or unsatisfactory.
- Local authority run services continue to perform highly compared to other sectors. A higher proportion of local authority services were evaluated as good, very good or excellent across all themes compared to the other sectors, for all types of daycare of children services. When considering only services that were found to be very good or excellent in all themes, there are some exceptions where privately run services perform better than other sectors, in particular privately run creches and out of school care services.
- In 90.6% of services offering funded places, the quality was found to be good or better in all quality themes.

Table 10 below shows the proportion of services achieving the highest grades, comparing to the previous two years.

Table 10: Percentage of services found to be good or better in all themes, and also those that are very good or excellent in all themes, 2016, 2017 and 2018

	Care Service Type	December 2014	December 2015	December 2016	December 2017	December 2018
All themes very good or excellent	Childminding	49.6%	48.8%	48.7%	47.6%	45.2%
	Daycare of children services	42.2%	41.5%	40.3%	37.8%	35.7%
All themes good or better	Childminding	91.0%	91.8%	91.8%	92.1%	91.9%
	Daycare of children services	90.3%	88.4%	87.6%	88.3%	88.0%

In terms of services found to be good or better in all themes, holiday playschemes had the biggest improvement compared to 2017 (94.6% of services, compared to 82.9% in 2017). There was also a small improvement (84.4% compared to 83.9% in 2017) in out of school care services.

When considering the services with the very best evaluations, those with all themes evaluated as very good or excellent, only holiday playschemes have shown an increase compared to 2017.

The rates of services found to be good or better in all themes and those evaluated as very good or excellent in all themes in illustrated in figure 4 and figure 5 below.

Figure 4: Percentage of services found to be good, very good or excellent in all quality themes comparing 2017 and 2018

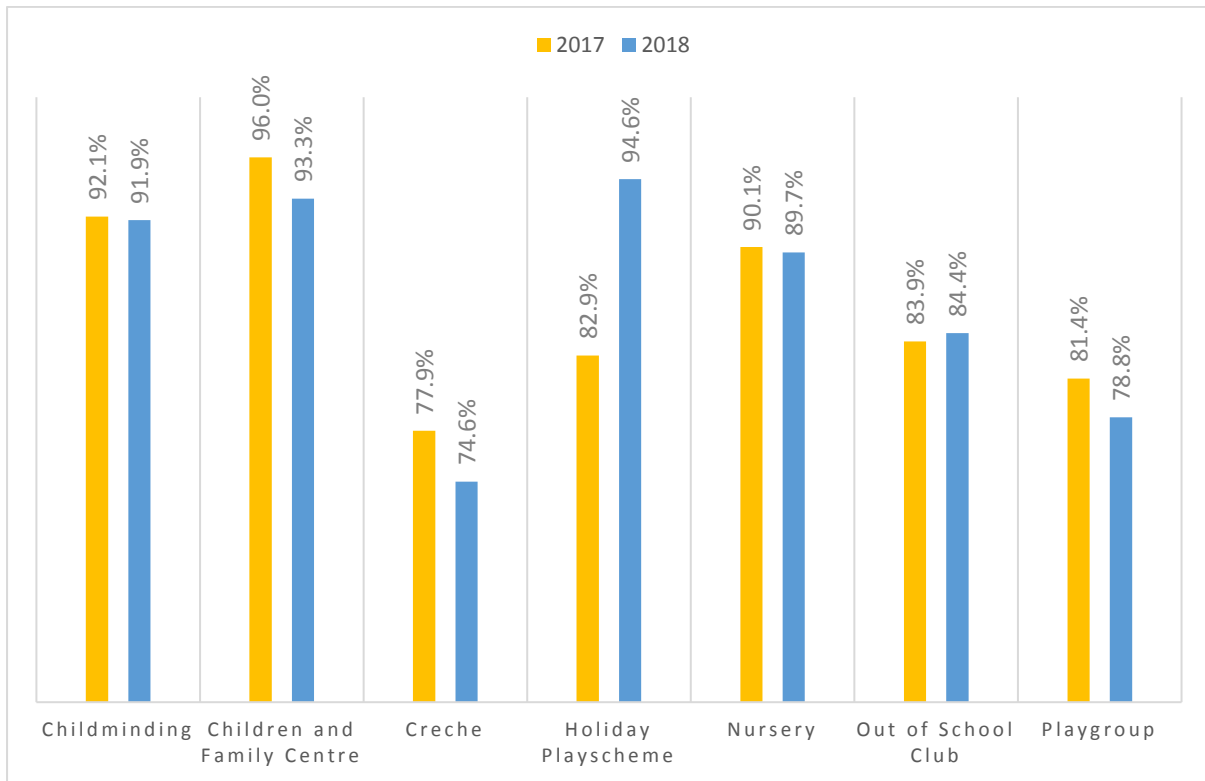
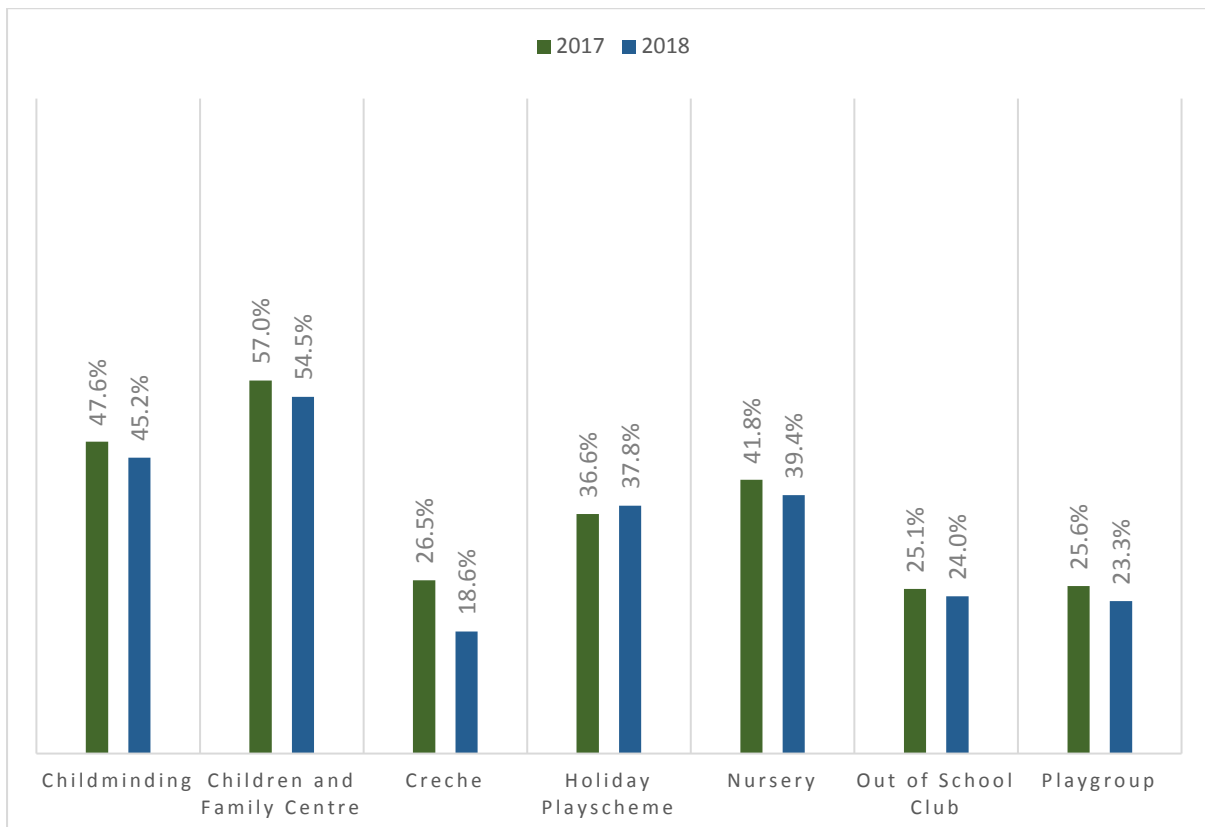


Figure 5: Percentage of services found to be very good or excellent in all quality themes comparing 2017 and 2018



4.1 Evaluations of quality by provider sector

High-quality services

While most early learning and childcare services continue to be of a high standard (with all quality themes found to be good or better) across all sectors, a larger proportion of local authority services were of a high quality compared to private and voluntary or not for profit services (see supporting table 34k for more detail). This is the case for all types of daycare of children service.

When considering the services that achieved the highest evaluations (all themes found to be very good or excellent) there are instances where private and voluntary or not for profit services outperform local authority services. In playgroups, creches and out of school care services, the private and voluntary or not for profit sectors have a greater proportion of services with the highest evaluations compared to local authorities.

More than nine out of every ten (91.9%) childminders were found to be good or better in all quality themes. Almost half of childminders (45.2%) were evaluated as very good or excellent in all quality themes. However, both rates have decreased since last year (91.9% down from 92.1% and 45.2% down from 52.3% respectively). For further detail see supporting tables 34 (a-k).

Services where significant improvement is needed

Services where quality was found to be weak or unsatisfactory in all themes were rare, with only two childminding services (0.04%) and 12 daycare of children services (0.3%) evaluated at this level. In 8.1% of childminders and 12.0% of daycare services, we found the quality was adequate or lower in at least one quality theme. In terms of each type of daycare of children service, playgroups and creches had the highest levels of services with at least one grade of adequate, weak or unsatisfactory (21% of playgroups and 25% of creches). Nurseries (10.3%, 247 services) and children and family centres (6.7%, 9 services) had the lowest levels of services with at least one grade of adequate, weak or unsatisfactory. For further details, see supporting tables 34 (a-k).

Detailed summaries of quality theme grading are presented in supporting tables 34(a-k), 35(a-g), 36(a-d) and 37(a-d).

5. Complaints in early learning and childcare services

In the year to 31 December 2018, the Care Inspectorate completed investigations into 340 complaints about early learning and childcare services. Most of these were about daycare of children services (71.2%) and the remaining 28.8% were about childminders.

Table 12: Complaints in early learning and childcare services, between 1 January and 31 December 2018

Care Service	Complaint investigations completed*	Number of complaints upheld	Upheld as % of all complaints investigated	Number of services with complaints upheld	Number of complaints upheld per 1,000 services	Number of complaints upheld per 1,000 places
Childminding	98	40	40.8%	21	7.8	1.3
Daycare of children	242	113	46.7%	45	31.0	0.7
Total	340	153	45.0%	66	-	-

* Count of individual complaint cases. Each complaint case may have multiple concerns investigated.

We upheld 113 complaints about daycare of children services, which was 46.7% of all investigations completed. This is lower than the 137 upheld complaints (50.6%) seen last year. We upheld 40 complaints about childminders (40.8% of complaints investigated) a decrease compared to the 65 upheld complaints (47.4%) last year.

The majority of complaints upheld about daycare of children services were about private nursery services (81.4%) followed by out of school care services (8.8%). 3.5% of complaints upheld in 2018 were about local authority nursery services.

The rates of complaints upheld in childminders and daycare of children services are relatively low compared to most other care service types that are registered with the Care Inspectorate. For example, in care homes for older people (about which we receive the most complaints) 442.5 complaints were upheld per 1,000 services compared to 7.8 complaints per 1,000 childminding services and 31.0 per 1,000 services in daycare of children services.

Each complaint case investigated can be about a number of different concerns.

- Of the complaints we upheld about childminders, the main reasons for complaints were: general health and welfare; communication (between the childminder and children's families); and conditions of registration (including exceeding capacity).
- Of the complaints we upheld about daycare of children services, the main reasons for complaints were: general health and welfare; issues around staffing (including staff levels and staff training); and communication between staff and children's families.

These most common reasons for complaint are consistent with those seen in the last two years. For more detailed information on complaints investigated, see supporting tables 38a and 38b.

6. Registered early learning and childcare services in local authority areas, urban and rural areas and by deprivation category

6.1 Local authority areas

There were variations in the numbers of early learning and childcare services available and in the number of children registered with services across local authorities in Scotland.

The local authorities with fewest early learning and childcare services per population (0-15 years) were Glasgow City and the neighbouring local authorities West Dunbartonshire, Renfrewshire, Inverclyde, North Lanarkshire and South Lanarkshire.

Generally, rural areas such as Orkney Islands, Angus and Highland had the highest rate of early learning and childcare services per 10,000 population aged 0-15 years. These clear distinctions between urban and rural areas in terms of the number of services aren't so clear when considering the rate of children registered per 100 population aged 0-15 years old.

Na h-Eileanan Siar, Inverclyde and North Lanarkshire had some of the lowest rates of children registered with early learning and childcare services, which is a mixture of urban and rural areas. East Renfrewshire, City of Edinburgh and Midlothian (all mostly urban areas) have the highest rates of children registered with early learning and childcare services. For more detail across other local authority areas, see supporting table 6.

The remote rural island authorities (Na h-Eileanan Siar, Orkney Islands and Shetland Islands) had the lowest average number of children per service, and were the only areas with fewer than 30 children registered per service. City of Edinburgh, East Ayrshire, East Dunbartonshire and East Renfrewshire on average had 75 or more children registered per service.

6.2 Urban and rural areas

There continues to be a higher rate of early learning and childcare services in small towns and rural areas compared to urban areas (rate per 10,000 population aged 0-15 years old).

The rate of services registered per 10,000 population (aged 0-15 years old) has decreased compared to 2017. The capacity in daycare of children services per 10,000 population (0-15 years old) however was roughly equal to the rate observed in 2017.

A comparison of 2018 to 2017 by urban-rural category is presented in supporting table 16b.

Nurseries

The highest rate of nursery services and places in nurseries (per 10,000 populations aged 0-5) was in the most rural areas. Large urban areas have the lowest rates per 10,000 population. However, on average large urban areas have much larger services (in terms of number of registered places) compared to rural areas. In comparison to 2017, the rate of nursery services per 10,000 population (aged 0-5) is similar (26.9 compared to 27.0 in 2017)), while the rate of places per 10,000 population (aged 0-5) and the average number

of places per service has increased. These increases were seen in all urban-rural categories.

A comparison of nursery services between 2018 and 2017 by urban-rural category is presented in supporting table 16c.

There are clear differences in the provision of nursery services by sector and in urban and rural areas. In the largest urban areas, local authorities and private providers supply a roughly equal amount of services, with each providing around 45% of services.

The proportion of services run by the private sector decreases through the more rural areas, down to only 6.4% of services in the most remote rural areas being privately run. The opposite is true for the public sector. In the most rural areas, the rate of services run by local authorities only increases, peaking at 85.6% of nursery provision in remote rural areas. Numbers of nursery services broken down by urban-rural categories and sector is illustrated in supporting table 15b and 16c.

Other ELC service types

Childminders

The lowest rates of childminders per population were in large urban areas and the highest rates were in accessible small towns. The smallest average capacity was in large urban areas (6.0 registered places per service) increasing up to 6.3 registered places per service in the most rural areas.

Out of school care services

The highest rate of services per 10,000 population was in large urban areas with the lowest rates in the more remote rural areas. The areas with the highest average number of places were the large urban areas (50.4 places per service) with the smallest services on average being in remote rural areas (25.2 places per service). The private and voluntary/ not for profit sectors operate most of the out of school care services available, with local authorities operating only 12.8% of services nationally.

Playgroups

The highest rates of playgroup services per 10,000 population were in the most remote rural areas (4.5 services per 10,000 population aged 0-5 in remote rural areas and 4.3 per 10,000 in accessible rural areas). The lowest rates were in the largest urban areas (1.2 services per 10,000 population). In terms of the average size of the services, there was only a small variation between different urban and rural areas with the average size between 20.0 and 25.2 places per service.

Supporting table 16d shows the rate of services and average number of places by urban-rural category for childminders, playgroups and out of school care services.

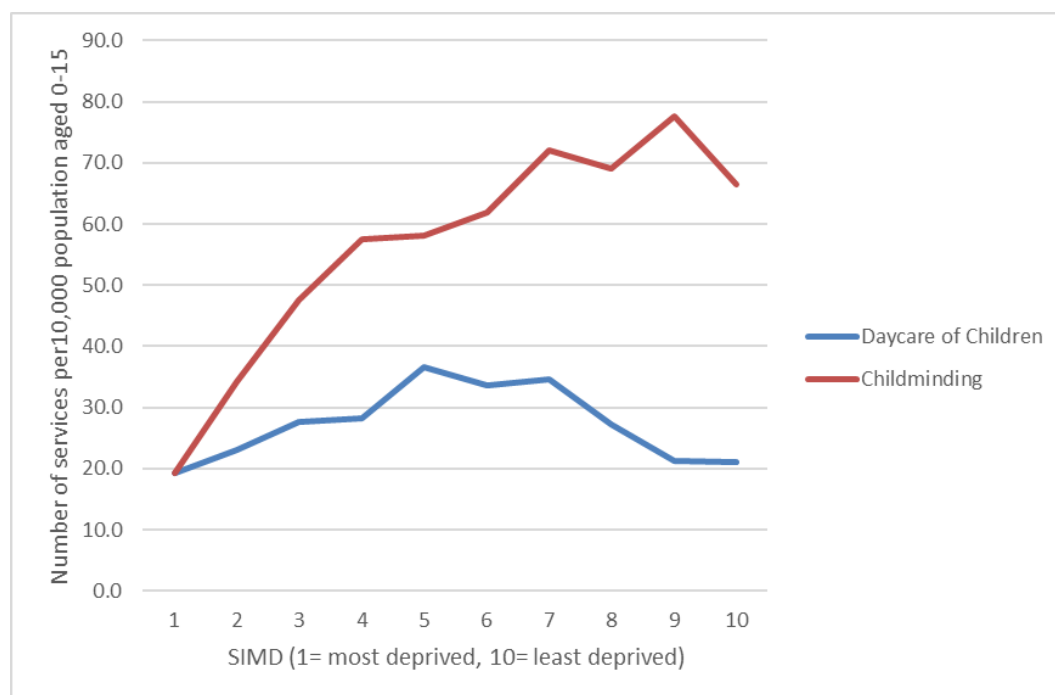
6.3 Scottish Index of multiple deprivation (SIMD) areas (2016 SIMD)

There are considerable differences in numbers of services operating according to levels of deprivation. In terms of the number of services per 10,000 population (aged 0-15) there was some correlation between the number of childminders and deprivation levels. In the

10% least deprived areas, there were 66.4 childminders per 10,000 population (aged 0-15). While in the 10% most deprived areas there were only 19.3 childminders per 10,000 population (aged 0-15).

There was no such correlation for daycare of children services overall. The rate of services in the most and least deprived areas was similar with slightly higher rates in the mid-ranked areas. This is illustrated in figure 6 below and supporting table 16a.

Figure 6: Number of services registered per 10,000 population aged 0-15 by SIMD deciles



As with all other daycare of children services, there was no correlation between numbers of nursery services and deprivation. There were however differences by deprivation level of sectors providing nursery services. In the most deprived areas local authorities provide the majority of nursery services, while in the least deprived areas the private sector operates the most services.

The voluntary or not for profit sector provides the fewest number of nursery services compared to the other two sectors, and the two areas where they provide the largest proportion of services are the 10% most deprived and the 10% least deprived areas.

Table 13 shows how provision by sector varies according to SIMD decile.

Table 13: Proportion of nursery services operated by sector and SIMD (2016) level

SIMD (2016) Decile	Provider sector		
	Local Authority	Private	Voluntary or Not for Profit
1 (10% most deprived)	60.5%	25.5%	14.0%
2	70.4%	25.2%	4.3%
3	69.3%	23.5%	7.2%
4	69.4%	25.2%	5.4%
5	68.0%	26.9%	5.2%
6	67.8%	24.1%	8.0%
7	56.1%	35.6%	8.3%
8	49.8%	40.9%	9.3%
9	52.5%	38.6%	8.9%
10 (10% least deprived)	39.6%	49.2%	11.2%
All Scotland	61.0%	31.0%	7.9%

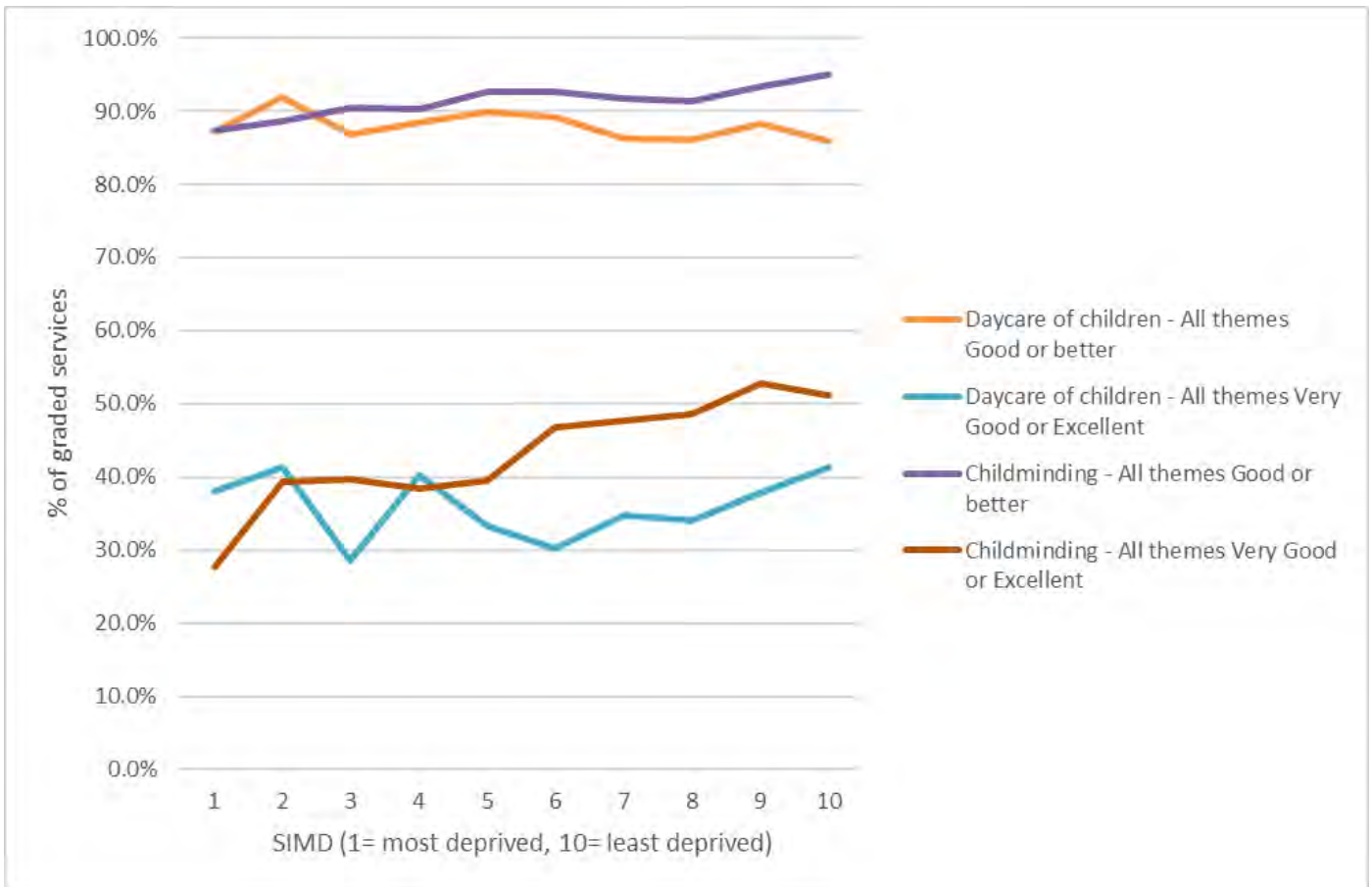
Quality theme evaluations by levels of deprivation

There are differences in the quality of childminding services depending on levels of deprivation. The rate of childminders found to be good or better for all quality themes increased as the level of deprivation decreased. In the 10% most deprived areas 87.3% of childminders were rated good or better, while in the 10% least deprived areas this increased to 95.0%. The difference was also apparent when considering services found to be very good or excellent; 27.7% of services in the 10% most deprived areas compared to 51.2% of services in the 10% least deprived areas were deemed to be at this high level.

In daycare of children services, the variation across different levels of deprivation is not as broad as in childminding services and as a result there is no correlation linking quality to deprivation. The rate of daycare of children services found to good or better in all quality themes fluctuates between around 86% and 92% depending on deprivation level.

Figure 7 below shows the level of services performing well as deprivation levels increase.

Figure 7: Rate of services evaluated as good or better (or very good and excellent) in all quality themes by deprivation level



In our Early Learning and Childcare statistics 2017 report, we noted a correlation between good evaluations in individual quality themes as deprivation levels decrease, in particular in the quality of environment theme. The situation at December 2018 however is different, with notable increases in quality in some of the most deprived areas and decreases in some of the least deprived areas. The rates of services evaluated as good or better in each individual theme is now similar in the most deprived and least deprived areas with the lowest amount of variation (compared to 2017) seen in the mid-ranked areas.

Figure 8 below shows the rate of services evaluated as good or better in each quality theme as deprivation levels vary.

Figure 8: Evaluations of daycare of children services by SIMD, services found to be good or better by quality theme



7. Service provision

7.1 Provision for different age groups

- Childminders, children and family centres and private nurseries continue to be the main service types offering care for children under two years of age.
- Childminding services typically cater for the widest range of age groups, with over 90% of childminders offering a service for children aged from 2 to 11 years old, with 59% also offering a service for children aged 12 and older.
- Children and family centres provision was mostly focused on young children up to the age of 5, while in contrast holiday playschemes offered a service mainly for children aged 5 and older.
- Crèches were offered mainly for children up to 5 years of age with playgroups predominantly catering for children aged between 2 and 4 years old.
- Nursery provision varied by provider sector. More than four out of five (85%) of private nurseries offered a service for babies aged under 1, while around a third of voluntary/not for profit nurseries offered this service. Less than 5% of local authority nurseries catered for children aged 1 year or younger. Local authority services mainly provided a service for 3- and 4-year-olds, while private and voluntary/not for profit services catered for a wider age range from 2 to 5 years. In addition, around 20% of private and voluntary/not for profit nurseries could also offer a service to children aged 6 to 11 years.
- Out of school care services were mainly provided for children aged 5 to 11, but over half (52%) of services also offered a service for children aged 4 and children aged 12 and over.

For further detailed information, please see supporting tables 28a – 28c.

7.2 Languages and service philosophies

The majority of childminders provided a service only in English. In 0.6% of childminders the service is delivered using either a mix of English and Gaelic or in Gaelic only (Gaelic only in less than five services). 0.8% of services could offer British Sign Language and 2.1% could deliver the service in another language, most commonly Polish, French, Arabic or German and also communication languages such as Makaton and Sign-along.

The rates of services using languages other than English is higher in daycare services than in childminders. 1.9% (70 services) of daycare of children services delivered their service in a combination of English and Gaelic or only in Gaelic (Gaelic only in 28 services) and 4.8% (175 services) could provide the service in another language. The provision of languages other than English has increased compared to 2017. See supporting table 29 for further information.

At 31 December 2018, 0.7% of nurseries (18 services) told us that they use the outdoor-based approach to provide the service. We define an outdoor-based service as one that describes itself as a specialist outdoor service and where children spend the majority of time outdoors. In addition, 0.3% of out of school care services and 0.5% of playgroups (less than five services in each instance) also told us they use an outdoor-based approach. This level is similar to 2017, when 19 nurseries told us that they provide their service exclusively outdoors along with a small number of (less than five each) playgroups and out of school care services.

In daycare of children services, 1.7% (62 services) followed a Suzuki/Montessori philosophy and 0.5% (17 services) followed a Steiner philosophy. Both these rates have reduced slightly compared to 2017. See supporting table 29 for further information.

7.3 School term and holiday availability

In term time

The number of services offering longer opening times to cover breakfast and after school hours has increased compared to 2017.

Overall, 71.6% of services offered care before school hours. This has increased from 69.2% in 2017.

Over a quarter of local authority nurseries (29.3%) provided an early morning service. This is considerably lower than the rate in private nurseries (80.0%) however, the early morning provision in local authority nurseries has seen a 18.9% increase in 2018 (an increase of 70 services). The rate of childminders offering early morning provision increased to 90.9% this year (from 88.6%). The rate of out of school care services providing an early morning service increased to 50.4% in 2018 compared to 44.7% in 2017.

Overall, 82.4% of services provided care after school hours, a slight increase compared to 82.0% in 2017. Almost all childminders (97.6%) provided their service after school hours. For further detailed information, please see supporting tables 30a – 30c.

During school holidays

Local authority run nurseries and playgroups had the lowest proportion of services offered during the holidays, with only around one in twelve services providing this (10.4% and 6.2% respectively). In contrast, the majority of privately operated nurseries (93.3%) provided a service during the school holidays.

Holiday playschemes, childminders, children and family centres and crèches had the highest levels of provision during the school holidays (during working hours in addition to evenings and weekends).

See supporting tables 30a-30c for more information.

7.4 Whole day and part day sessions

The proportion of daycare of children services that offer whole-day sessions has been increasing year on year, and this trend has continued in 2018. 62.7% of services overall and 67.5% of nurseries offered whole-day sessions or the choice of whole- or part-day sessions. See table 18 below for a summary covering 2014 to 2018.

Table 18: Sessions available between 2014 and 2018 in daycare of children services and nurseries

All daycare of children services

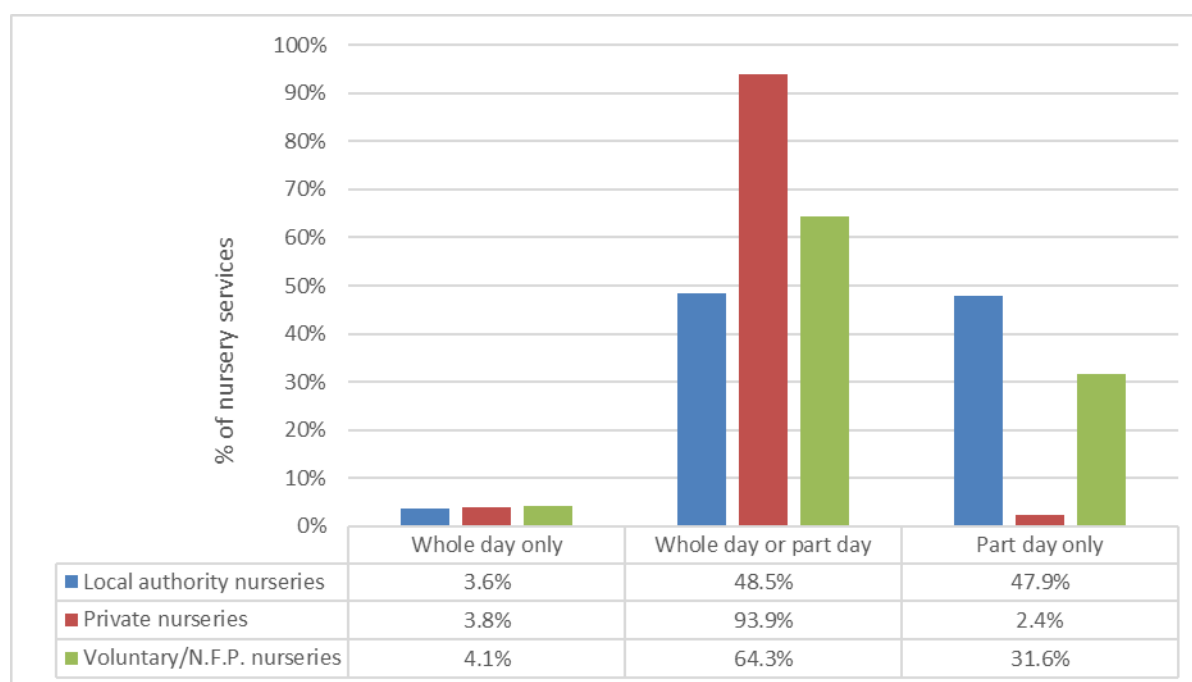
Sessions available	2014	2015	2016	2017	2018
whole day only	3.0%	3.1%	3.2%	3.5%	4.4%
whole day or part day	45.7%	47.7%	51.4%	54.7%	58.3%
part day only	50.8%	48.6%	44.5%	40.8%	37.3%

All nursery services

Sessions available	2014	2015	2016	2017	2018
whole day only	1.4%	1.6%	1.6%	2.4%	3.7%
whole day or part day	46.4%	49.5%	54.3%	58.6%	63.8%
part day only	51.7%	48.9%	43.8%	39.2%	32.5%

The sessions offered in nurseries varied widely depending on the sector providing the service. For example, the majority of private nurseries typically offered a choice of part days or full days, with only a small minority **only** providing full days or **only** providing part days. The majority (52.1%) of local authority run nurseries now offer full day places only or a choice of full or part days. The proportion of local authority services offering the choice of full or part days has increased this year to 52.1% (compared to 39.9% in 2017).

Figure 9: Sessions available in nurseries by sector, as at 31 December 2018



Some services also offer shorter, flexible sessions instead of strictly providing full or part days. Most services offering short, flexible sessions also offered whole days and part days too. There have been increases in the rate of services offering these flexible sessions compared to last year in most daycare of children service types including:

- 60.3% of crèches (compared to 53.3% in 2017)
- 44.9% of children and family centres (33.1% in 2017)
- 16.5% of nurseries (15.0% in 2017)
 - 24.1% of private nurseries (23.1% in 2017)
 - 12.2% of local authority nurseries (10.7% in 2017).

See supporting tables 31a and 31b for further information.

7.5 Provision of meals and snacks

Most childminders (92.4%) continue to provide meals in their service (similar to the 92.6% in 2017). The meals were provided by the service (19.5%) by parents only (51.2%) or by both (21.8%). Almost all childminders (99.2%) provided snacks for the children in the services, which is similar to 2017 (99.1%).

Around 55% of daycare of children services provided meals in the service (whether by the service alone or by parents or both). This is an increase compared to 48% in 2017. This increase in the provision of meals is likely linked to the increase in opening hours and the increase in whole-day sessions offered.

In 59.5% of private nurseries where meals were served, the meals were provided solely by the service. In local authority nurseries, the provision was split between service only

provision (33.8% of those serving meals) and a combination of food provided by the service and by parents (47.5%).

More than half of local authority nurseries served meals in the service. This has increased from 39.3% in 2017 to 53.9% in 2018. Meals were served in 95.7% of private nurseries and 65.8% of voluntary/not for profit nurseries (whether supplied by the service, parents or both).

Almost all (around 99%) of daycare of children services provided snacks for the children.

See supporting tables 32a and 32b for further information.

Appendix 1: Background and methodology

The Care Inspectorate is the scrutiny body for all care services for children and adults in Scotland. This includes a wide range of services for children and young people, such as fostering, adoption and residential care. This report focuses in childminding and daycare of children services, collectively known as early learning and childcare services in this report. Statistics on, for example, looked after children are published by the Scottish Government and can be found at:

<http://www.gov.scot/Topics/Statistics/Browse/Children>

This report is about the provision and use of daycare of children and childminders registered with the Care Inspectorate as at 31 December 2018. Each daycare of children service can provide a range of different types of provision, for example a nursery can also provide a breakfast club and out of school care. In this report, we have only used the main type of provision, so a service that provides a nursery as main provision but also provides out of school care, will only be recorded as a nursery. This may lead to under reporting of the availability of some types of provision.

- Previous versions of this report, which were published to cover the years 2010 to 2017 are available at:
<http://www.careinspectorate.com/index.php/statistics-and-analysis>
- The statistics in this report are produced using information from the latest Care Inspectorate annual returns which asked for information about the previous calendar year (1 January 2018 to 31 December 2018) and the Care Inspectorate service list (as at 31 December 2018). Figures relating to previous years are taken from our reports on early learning and childcare statistics publications for 2010, 2011, 2012, 2013, 2014, 2015, 2016 and 2017.
- Our inspectors use the annual returns when planning care service inspections and carrying out risk assessments. Some of the information in the annual return is also aggregated and used by the Care Inspectorate to inform wider statistical analysis and comparisons across, for example, care service providers and geographical areas.
- The Care Inspectorate requires (under the Public Services Reform (Scotland) Act 2010, section 53(6)) all providers that are registered with the Care Inspectorate to complete and submit an annual return in order to provide us with the information needed to help plan and carry out inspections effectively. Although services registered after 1 October 2018 do not have to submit an annual return for December 2018, we encourage them to do so.
- Of the 8,754 childcare services registered with the Care Inspectorate at 31 December 2018, 7,852 (90%) submitted an annual return, matching the 90% response rate seen in the previous year. The annual return data has been imputed for those services that did not submit an annual return (see below). For this reason, some of the supporting tables contain figures that have been rounded to the nearest 10; therefore, rounded figures may differ slightly to the overall totals.

Please note that where a table contains percentages, those that are based on numbers equal to or smaller than 10 are shown in orange coloured text.

Appendix 2: Data sources

The Care Inspectorate service list (as at 31 December 2018) has been used to provide figures on:

- the total number of registered daycare of children and childminding services
- whether services were active or inactive (see Appendix 3 – Data cleaning for more information on inactive services)
- whether services were run by public, private or voluntary/not for profit providers
- the registered capacity of each service (that is the total number of children that can be cared for at any one time)
- the postcode of the service, from which we have derived the local authority, deprivation category and urban-rural category of the service.

We have used Care Inspectorate annual returns (as at 31 December 2018) to provide estimates for:

- the main service type, for example nursery, playgroup, out of school care and so on
- the number of children registered with the service as at 31 December 2018
- whether daycare of children services provide funded places as at 31 December 2018
- the number of children registered with services that use the services for out of school care as at 31 December 2018
- the age groups catered for and term-time/holiday-time availability of the service
- whether the service was available for full day or part day sessions
- whether meals or snacks were provided by the service or by the parents
- the languages and service philosophies used by services
- characteristics and qualifications of childminders.

The 2016 Scottish Index of Multiple Deprivation (SIMD) has been used to assign deprivation levels based on the postcode location of each childcare service. The SIMD does not reflect the locations of where children using services live.

Further information about the Scottish Index of Multiple Deprivation is available here:

<https://www2.gov.scot/Topics/Statistics/SIMD>

Scottish Government urban/rural categories have been used to assign an urban/rural urban/rural category to the postcode location of each childcare service. The urban/rural categories do not reflect the locations where children using the services live.

Further information about the Scottish Government Urban Rural Classification is available here:

<http://www.gov.scot/Topics/Statistics/About/Methodology/UrbanRuralClassification>

The National Records of Scotland mid-year population estimates (2016) have been used to calculate rates. Further information about the population estimates is available here:

<https://www.nrscotland.gov.uk/statistics-and-data/statistics/statistics-by-theme/population/population-estimates/mid-year-population-estimates>

Appendix 3: Data cleaning and dealing with missing data

Where there have been any data input errors or incomplete responses identified in relation to specific questions, these have been fixed where possible before any analysis has taken place. For example, where a service's status was 'active' as at 31 December 2018 but the service reported working zero hours and recorded zero number of users, the status is treated as 'inactive' for the purposes of the analysis (therefore the number of active childminders published in this report may differ from that in other Care Inspectorate publications and by the Scottish Social Services Council in their Workforce Data report).

Not all childcare services have submitted an annual return. This means that there are some gaps in the data that we need to take into account.

Summary of annual return response rates, December 2018

Main service type	Response rate at December 2018
Childminders	85%
Children and Family Centre	99%
Creche	92%
Holiday Playscheme	95%
Nursery	96%
Out of School Club	96%
Playgroup	97%
All Services	90%
All Services (excl. childminders)	96%

We took the following approach to handling missing data:

A. Imputation of missing data using historic data

Where a daycare of children service did not submit an annual return for 2018, but submitted a return for either 2017 or 2016, the information submitted in the most recent historic annual return was used to impute the missing data for 2018. Where a service re-registered (for example, due to a change in ownership or service provider) and information was missing for 2018, the most recent historic information from the previously registered service was used (if an annual return was submitted in 2017 or 2016). For childminders the information from annual returns from 2015, 2016 and 2017 were used in the same way.

B. Imputation of missing data where no historic data is available

Where a service has not provided any information in 2017 or 2016 (or 2015 for childminders), or where a service was newly registered in 2018 (and not a re-registration) missing data has been estimated. To estimate missing data, we have taken into account the following variables: service size; service location (local authority area and level of

deprivation) and service category (nursery, playgroup etc.). We then estimated the missing data using average values from services based on the above criteria. No estimates were used for new data items, the information for which is based on submitted annual returns only.

C. Testing the impact of imputing data

To help assess the impact of imputing missing data, some of the final results have been compared to estimates obtained from using data from completed annual returns only (that is ignoring any missing data).

For the number of children registered with childminders at 31 December 2018, the results using imputation (as used in the publication supporting tables) produce an estimate of 32,700. This is higher than the non-estimated figure of 28,920 (based on completed annual returns only).

For daycare of children services (excluding crèche services) the estimated results after imputing (as used in the publication supporting tables) produce an estimate of 219,520 children registered with daycare of children services. This is higher than the non-estimated figure of 213,540 (based on completed annual returns only).

Appendix 4: Changes to data items collected in 2018

There were no changes in the questions asked in the December 2018 annual return compared to December 2017.

Appendix 5: How the Care Inspectorate assesses quality themes during inspection

During inspections, we assess quality themes, which cover the main areas of a service's work. How well the service performs in these areas will indicate how good the service is.

The quality themes are:

- quality of care and support: how well the service meets the needs of each person who uses it
- quality of environment: where the service is delivered, for example, how clean, well maintained and accessible it is, the atmosphere of the service, how welcoming it is.
- quality of staffing: the quality of the staff including their qualifications and training.
- quality of management and leadership: how the service is managed and led and how it develops to meet the needs of the people who use it.

Each theme is evaluated using a six-point scale.

6 – Excellent

5 – Very Good

4 – Good

3 – Adequate

2 – Weak

1 – Unsatisfactory

Rate this publication

Please provide [feedback](#) on this publication to help us improve future publications.

Contacts for any statistical or technical queries

Tim Gronneberg
Information Analyst
Intelligence Team
Care Inspectorate
Compass House, 11 Riverside Drive
Dundee, DD1 4NY

Phone: 01382 207312

Email: tim.gronneberg@careinspectorate.gov.scot

Ingrid Gilray
Intelligence and Analysis Manager
Intelligence Team
Care Inspectorate
Compass House, 11 Riverside Drive
Dundee, DD1 4NY

Phone: 01382 207179

Email: ingrid.gilray@careinspectorate.gov.scot

Headquarters

Care Inspectorate
Compass House
11 Riverside Drive
Dundee
DD1 4NY
Tel: 01382 207100
Fax: 01382 207289

Subscribe free for our latest news
and updates by email:
<http://bit.ly/CI-subscribe>

Website: www.careinspectorate.com

Email: enquiries@careinspectorate.gov.scot

Care Inspectorate Enquiries: 0345 600 9527

This publication is available in other formats and other languages on request.

Tha am foillseachadh seo ri fhaighinn ann an cruthannan is cànan eile ma nithear iarrtas.

অনুরোধসাপেক্ষে এই প্রকাশনাটি অন্য ফরম্যাট এবং অন্যান্য ভাষায় পাওয়া যায়।

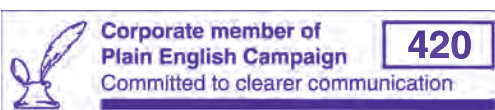
یہ اشاعت درخواست کرنے پر دیگر شکلوں اور دیگر زبانوں میں فراہم کی جاسکتی ہے۔

ਬੇਨਤੀ 'ਤੇ ਇਹ ਪ੍ਰਕਾਸ਼ਨ ਹੋਰ ਰੂਪਾਂ ਅਤੇ ਹੋਰਨਾਂ ਭਾਸ਼ਾਵਾਂ ਵਿਚ ਉਪਲਬਧ ਹੈ।

هذه الوثيقة متوفرة بلغات ونماذج أخرى عند الطلب

本出版品有其他格式和其他語言備索。

Na życzenie niniejsza publikacja dostępna jest także w innych formatach oraz językach.



© Care Inspectorate 2019 | Published by: Communications | IM-0819-023

 @careinspect  careinspectorate

Frame vector created by freepik - www.freepik.com

